

EXTERNAL SERVICES SCRUTINY COMMITTEE - SAFER HILLINGDON PARTNERSHIP PERFORMANCE MONITORING

Contact Officer: Teresa McKee
Telephone: 01895 556322

Appendix 1 - Safer Hillingdon Partnership Plan 2016/17
Appendix 2 - Performance data

REASON FOR ITEM

To enable the Committee to comment on performance to date towards the objectives in the 2016/17 Plan.

OPTIONS AVAILABLE TO THE COMMITTEE

The Committee is asked to note the contents of the report and ask questions in order to clarify matters of concern in the Borough.

SUGGESTED COMMITTEE ACTIVITY

Members to scrutinise performance of the Safer Hillingdon Partnership Plan 2016/2017 from April to June 2016 (quarter one).

BACKGROUND PAPERS

None.

APPENDIX 1 - Safer Hillingdon Partnership Plan 2016/17

Priority Theme 1 - Reduce Violence					
Objective	Target	Q1	Q2	Q3	Q4
Reduce violent crime	Reduce non-domestic Violence with Injury in schools by 10% (Baseline for 2015/16 = about 10% of all non-DA VWI (160 offences)). Target = 144 offences	Q1 = 25 offences ON TRACK			
	Prevent an increase in robbery following last year unprecedented 34% reduction in offences (Baseline for 2015/16 = 295 offences). Target = 295 offences	Q1 = 84 SOME SLIPPAGE			
Tackle domestic abuse	Increase Evidenced Based prosecutions against domestic abuse offenders by 10% (Baseline for 2015/16 = 29 prosecutions). Target = 32 prosecutions	Q1 = 8 prosecutions ON TRACK			
	Increase domestic abuse incidences reported to the police by 10% (Baseline for 2015/16 = 2627). Target = 2890 crime reports	Q1 = 1313 total reports (includes non crime) Q1 = 654 crime allegations SOME SLIPPAGE			
	Of all referrals to Hillingdon IDVA service, a minimum of 85% of clients will engage (risk assessment and safety plan implemented) (Baseline for 2015/16 = 83%)	82% (65 out of 79 new referrals) ON TRACK			
	Review and launch an updated Domestic Abuse Strategy for Hillingdon	Timeline prepared for discussion at DV Executive Group (September meeting)			
	Hold a White Ribbon Day event with partners.	Planning has started for the event - theme yet to be determined ON TRACK			
	Implement the agreed recommendations for DHR Charlotte	Work towards implementing the recommendations has commenced (separate confidential report to the SHP Board) ON TRACK			
	Submit to the Home Office the overview report for DHR#2	It is anticipated that the final report will be ready for consideration by the SHP in Jan 2017, with submission to the HO by March.			

PART I – MEMBERS, PUBLIC AND PRESS

		ON TRACK			
--	--	-----------------	--	--	--

Priority Theme 2 - Reducing Offending

Objective	Target	Q1	Q2	Q3	Q4
Tackle youth offending	Reduce the number of first time entrants (FTE) by 8% (Baseline for 2015/16 = 142). Target = 131 FTE	Q1 = 29 FTE ON TRACK			
Address drug-related offending	As a minimum, 30% of clients will achieve abstinence from heroin and/or crack within 6 months of having fully engaged with DIP (Baseline for 2015/16 = 21%)	34% (13 out of 38 clients achieved abstinence) ON TRACK			

Priority Theme 3 - Identify and protect vulnerable residents and locations

Objective	Target	Q1	Q2	Q3	Q4
Reduce burglary	Reduce Burglary dwelling by 5% (Baseline for 2015/16 = 1413 offences). Target = 1342 offences	Q1 = 239 offences ON TRACK			
	Distribute MetTrace liquid to 4,000 more homes (Last year 6,500 homes covered) - Restricted on this as locations are dictated by the manufacturers.	5375. Phase 1 was completed with 10728 delivered by June (4228 up on 6500). A further 1147 have also been delivered as part of phase 2. ON TRACK			
Deal effectively with ASB	Continue to ensure 75% of ASB cases reported to the council are closed with a successful outcome (problem has been solved).	65% (767 from 1175) OFF TARGET (amended following the SHP Board meeting on 13.09.16)			
	Reduce repeat reports of ASB made to police by 10% (Baseline for Q4 2015/16 = 224)	Q1 = 218 ON TRACK			
	15% of perpetrators who are considered at the CR MARAC will receive a Criminal Behaviour Order (Baseline for 2015/16 = 15%)	To be reported on in Q3 onwards			

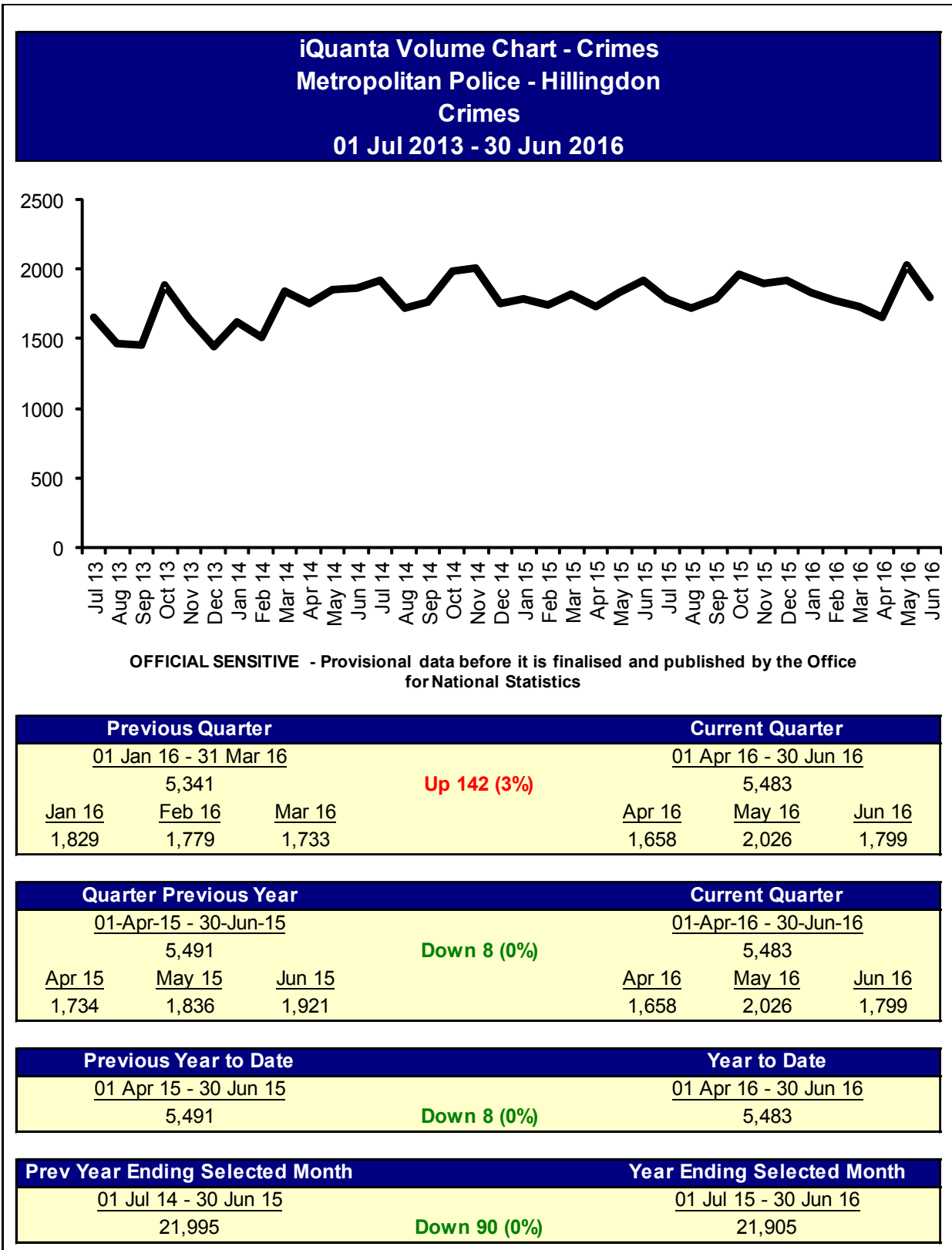
PART I – MEMBERS, PUBLIC AND PRESS

Priority Theme 3 - Identify and protect vulnerable residents and locations

Objective	Target	Q1	Q2	Q3	Q4
Protect vulnerable residents from harm	85% of residents who are referred to the CR MARAC will have their vulnerability reduced through directed support (Baseline for 2015/16 = 82%)	78% (Out of the 37 clients the CR MARAC dealt with in Q1, 29 have had their vulnerability reduced) ON TRACK			
	55% of residents who are referred to the CR MARAC will have an enhanced mental health support where appropriate (Baseline for 2015/16 = 52%)	51% (19 out of 37 clients) ON TRACK			
	Increase cadet cybercrime presentations to elderly by 50 presentations to 1000 residents (Baseline for 2015/16 = 75 presentations to 2000 residents)	Q1 = 15 presentations to 520 residents ON TRACK			
	Reduce number of arson fires to 267 (195 stretch target) compared to 240 in 2015/16	Awaiting data from LFB			
	Carry out 2,400 HFSV -1,920(80%) in priority postcodes (Baseline for 2015/16 = 2595)	Awaiting data from LFB			
	Reduce number of dwelling fires to 148 (137 stretch target) compared to 150 in 2015/16	Awaiting data from LFB			
Improve confidence through engagement with residents	Improve overall satisfaction rates with the Police by 10% (Baseline for 2015/16 = 74.7%). Target = 82%	79.8% SOME SLIPPAGE			
	Improve confidence with the Police by 10% (Baseline for 2015/16= 63%). Target = 69%	58% OFF TARGET (amended following the SHP Board meeting on 13.09.16)			

PART I – MEMBERS, PUBLIC AND PRESS

APPENDIX 2 - Performance data (taken from iQuanta)

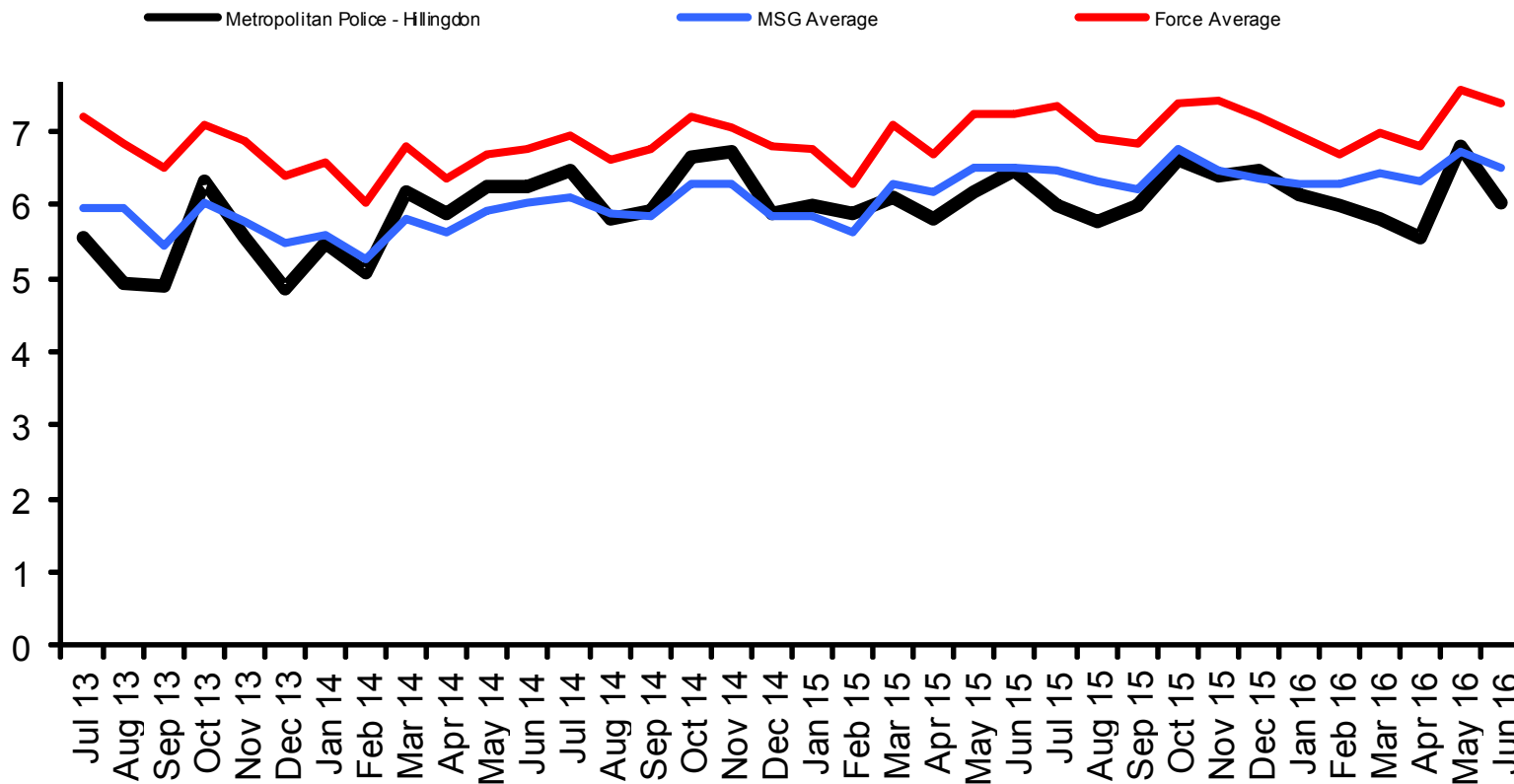


iQuanta Comparison Chart - Crimes per 1000 Residents

Metropolitan Police - Hillingdon

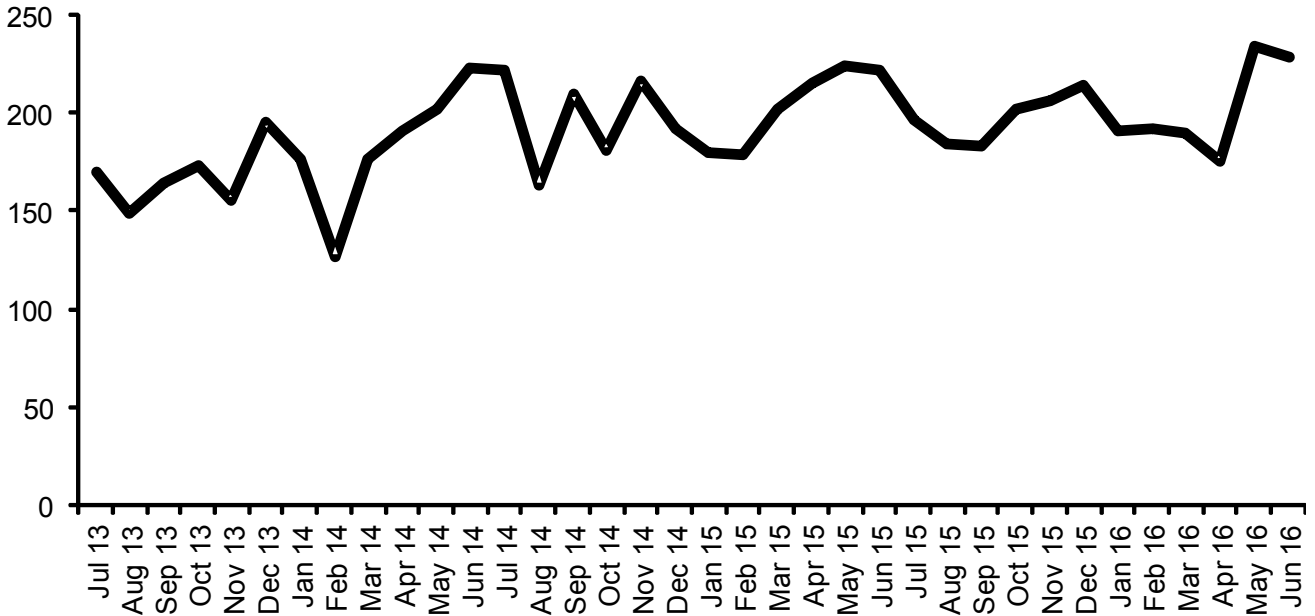
Crimes

01 Jul 2013 - 30 Jun 2016



OFFICIAL SENSITIVE - Provisional data before it is finalised and published by the Office for National Statistics

**iQuanta Volume Chart - Crimes
Metropolitan Police - Hillingdon
Violence with injury (iQuanta)
01 Jul 2013 - 30 Jun 2016**



OFFICIAL SENSITIVE - Provisional data before it is finalised and published by the Office for National Statistics

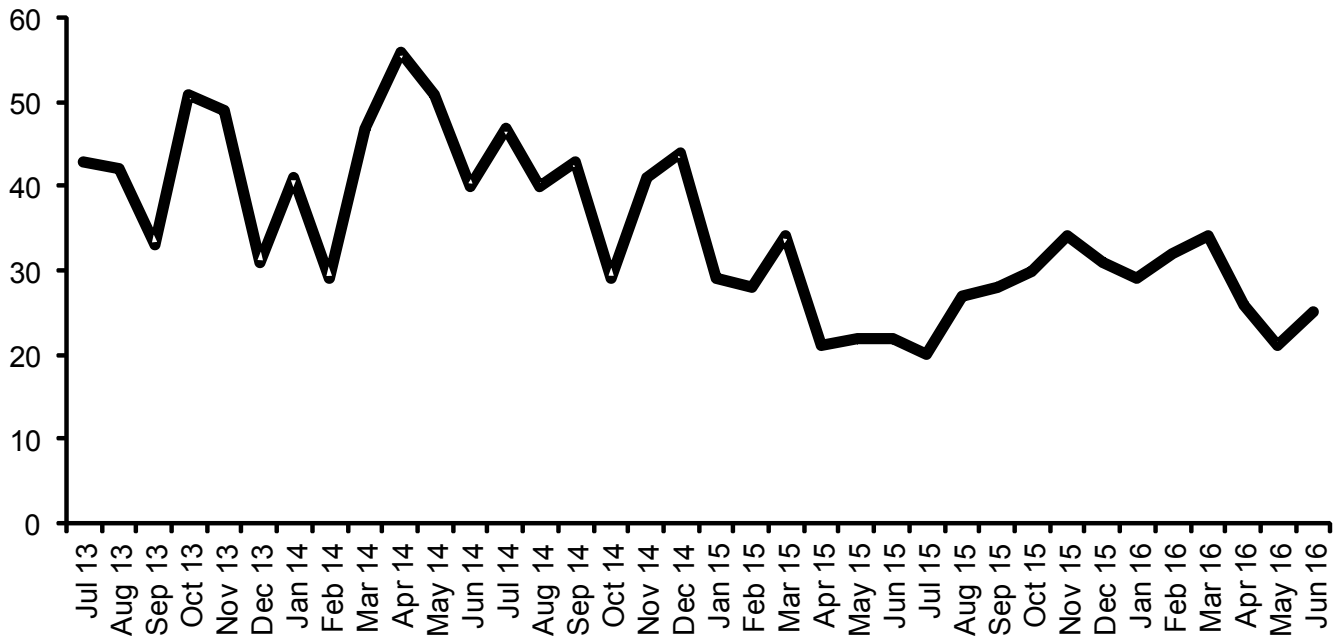
Previous Quarter			Current Quarter		
01 Jan 16 - 31 Mar 16			01 Apr 16 - 30 Jun 16		
573			Up 65 (11%)		
<u>Jan 16</u>	<u>Feb 16</u>	<u>Mar 16</u>	<u>Apr 16</u>	<u>May 16</u>	<u>Jun 16</u>
191	192	190	175	234	229

Quarter Previous Year			Current Quarter		
01-Apr-15 - 30-Jun-15			01-Apr-16 - 30-Jun-16		
661			Down 23 (3%)		
<u>Apr 15</u>	<u>May 15</u>	<u>Jun 15</u>	<u>Apr 16</u>	<u>May 16</u>	<u>Jun 16</u>
215	224	222	175	234	229

Previous Year to Date	Year to Date
01 Apr 15 - 30 Jun 15	01 Apr 16 - 30 Jun 16
661	Down 23 (3%)
	638

Prev Year Ending Selected Month	Year Ending Selected Month
01 Jul 14 - 30 Jun 15	01 Jul 15 - 30 Jun 16
2,406	Down 9 (0%)
	2,397

**iQuanta Volume Chart - Crimes
Metropolitan Police - Hillingdon
Robbery
01 Jul 2013 - 30 Jun 2016**



OFFICIAL SENSITIVE - Provisional data before it is finalised and published by the Office for National Statistics

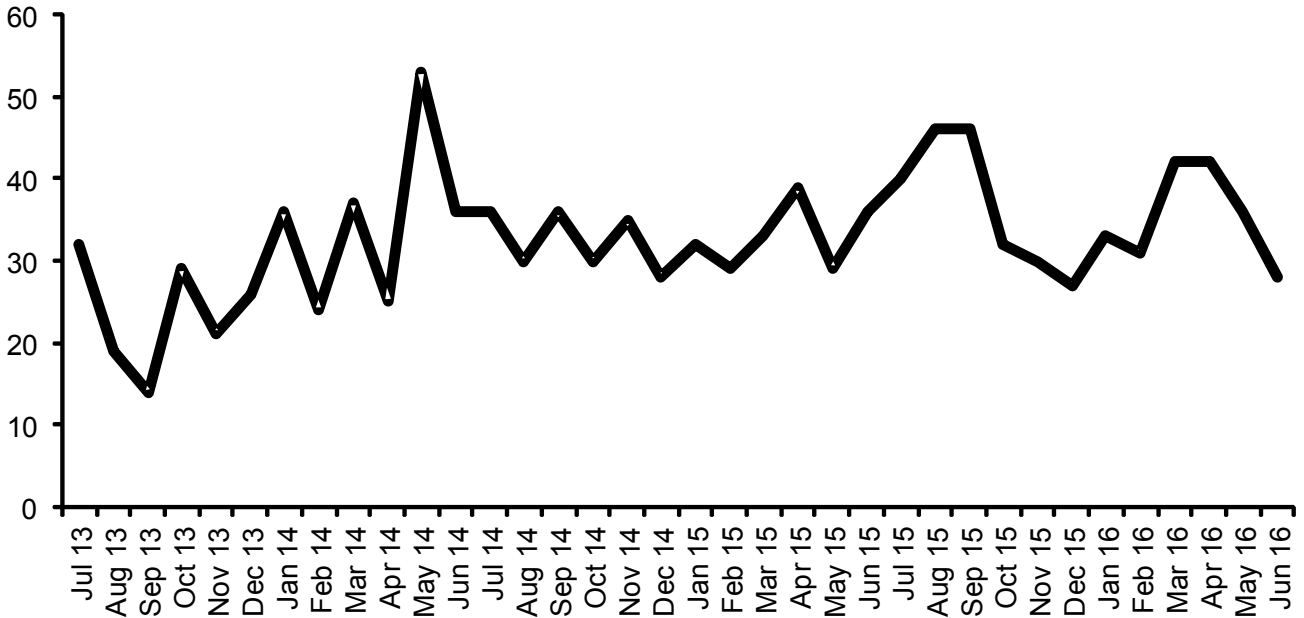
Previous Quarter			Current Quarter					
01 Jan 16 - 31 Mar 16			01 Apr 16 - 30 Jun 16					
95			Down 23 (24%)			72		
<u>Jan 16</u>	<u>Feb 16</u>	<u>Mar 16</u>	<u>Apr 16</u>	<u>May 16</u>	<u>Jun 16</u>			
29	32	34	26	21	25			

Quarter Previous Year			Current Quarter					
01-Apr-15 - 30-Jun-15			01-Apr-16 - 30-Jun-16					
65			Up 7 (11%)			72		
<u>Apr 15</u>	<u>May 15</u>	<u>Jun 15</u>	<u>Apr 16</u>	<u>May 16</u>	<u>Jun 16</u>			
21	22	22	26	21	25			

Previous Year to Date		Year to Date			
01 Apr 15 - 30 Jun 15		01 Apr 16 - 30 Jun 16			
65		Up 7 (11%)		72	

Prev Year Ending Selected Month		Year Ending Selected Month			
01 Jul 14 - 30 Jun 15		01 Jul 15 - 30 Jun 16			
400		Down 63 (16%)		337	

**iQuanta Volume Chart - Crimes
Metropolitan Police - Hillingdon
Sexual offences (ONS)
01 Jul 2013 - 30 Jun 2016**



OFFICIAL SENSITIVE - Provisional data before it is finalised and published by the Office for National Statistics

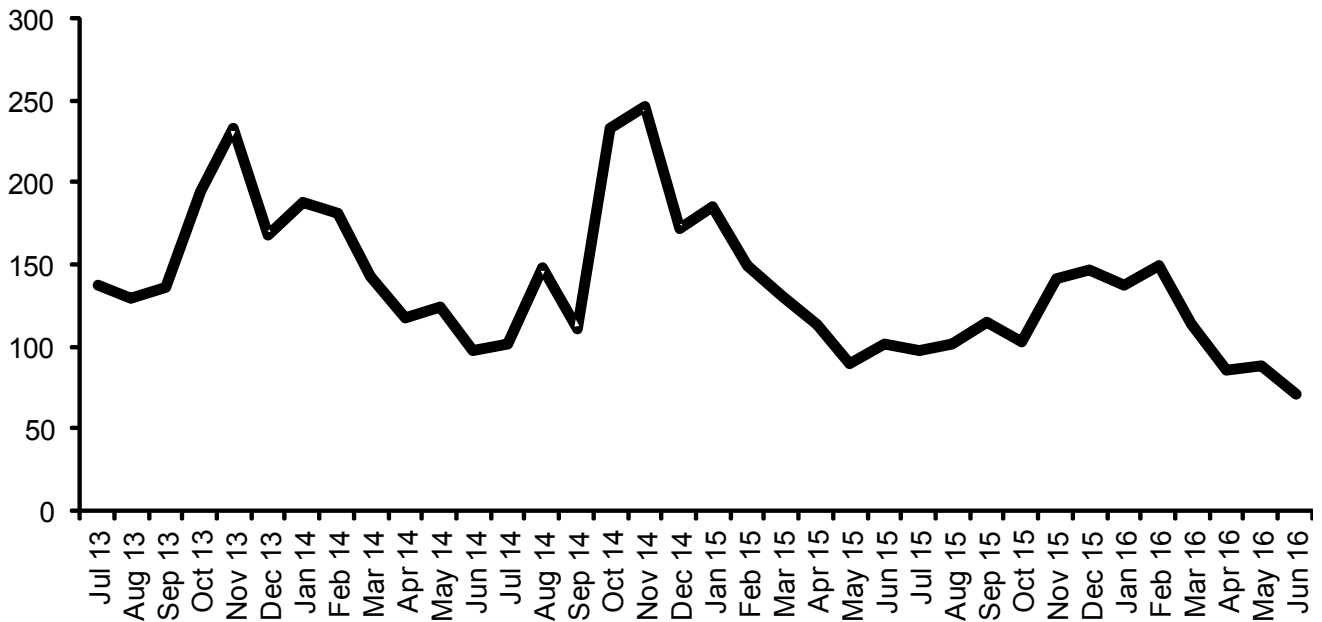
Previous Quarter			Current Quarter					
01 Jan 16 - 31 Mar 16			01 Apr 16 - 30 Jun 16					
106			No Change			106		
<u>Jan 16</u>	<u>Feb 16</u>	<u>Mar 16</u>		<u>Apr 16</u>	<u>May 16</u>	<u>Jun 16</u>		
33	31	42		42	36	28		

Quarter Previous Year			Current Quarter					
01-Apr-15 - 30-Jun-15			01-Apr-16 - 30-Jun-16					
104			Up 2 (2%)			106		
<u>Apr 15</u>	<u>May 15</u>	<u>Jun 15</u>		<u>Apr 16</u>	<u>May 16</u>	<u>Jun 16</u>		
39	29	36		42	36	28		

Previous Year to Date		Year to Date			
01 Apr 15 - 30 Jun 15		01 Apr 16 - 30 Jun 16			
104		Up 2 (2%)		106	

Prev Year Ending Selected Month		Year Ending Selected Month			
01 Jul 14 - 30 Jun 15		01 Jul 15 - 30 Jun 16			
393		Up 40 (10%)		433	

**iQuanta Volume Chart - Crimes
Metropolitan Police - Hillingdon
Burglary in a dwelling
01 Jul 2013 - 30 Jun 2016**



OFFICIAL SENSITIVE - Provisional data before it is finalised and published by the Office for National Statistics

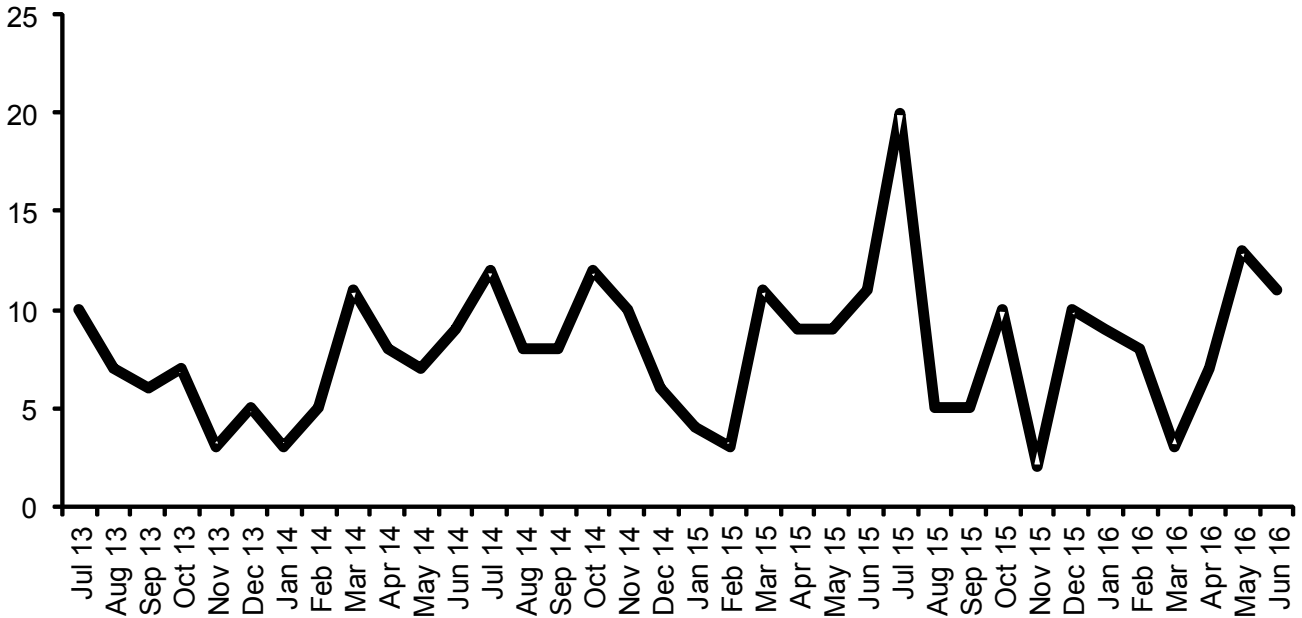
Previous Quarter			Current Quarter		
01 Jan 16 - 31 Mar 16			01 Apr 16 - 30 Jun 16		
401			244		
<u>Jan 16</u>	<u>Feb 16</u>	<u>Mar 16</u>	<u>Apr 16</u>	<u>May 16</u>	<u>Jun 16</u>
137	150	114	85	88	71

Quarter Previous Year			Current Quarter		
01-Apr-15 - 30-Jun-15			01-Apr-16 - 30-Jun-16		
305			244		
<u>Apr 15</u>	<u>May 15</u>	<u>Jun 15</u>	<u>Apr 16</u>	<u>May 16</u>	<u>Jun 16</u>
114	90	101	85	88	71

Previous Year to Date	Year to Date
01 Apr 15 - 30 Jun 15	01 Apr 16 - 30 Jun 16
305	244

Prev Year Ending Selected Month	Year Ending Selected Month
01 Jul 14 - 30 Jun 15	01 Jul 15 - 30 Jun 16
1,783	1,352

**iQuanta Volume Chart - Crimes
Metropolitan Police - Hillingdon
Arson
01 Jul 2013 - 30 Jun 2016**



OFFICIAL SENSITIVE - Provisional data before it is finalised and published by the Office for National Statistics

Previous Quarter			Current Quarter		
<u>01 Jan 16 - 31 Mar 16</u>			<u>01 Apr 16 - 30 Jun 16</u>		
20			31		
Up 11 (55%)					
<u>Jan 16</u>	<u>Feb 16</u>	<u>Mar 16</u>	<u>Apr 16</u>	<u>May 16</u>	<u>Jun 16</u>
9	8	3	7	13	11

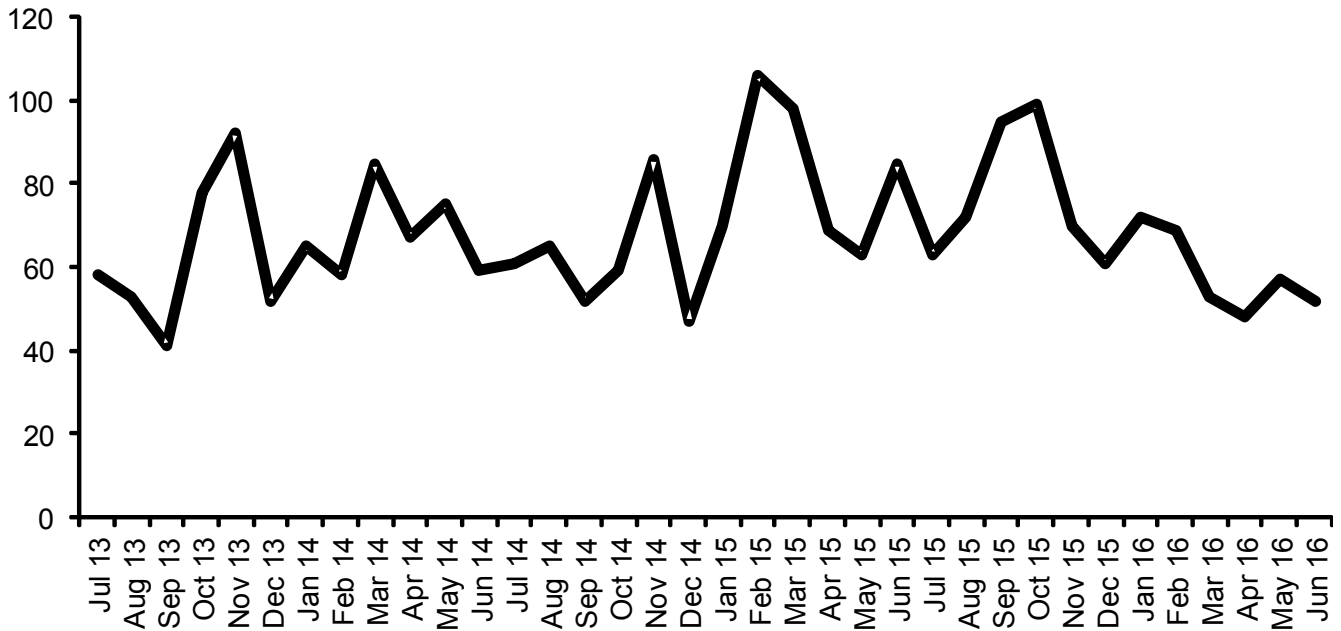
Quarter Previous Year			Current Quarter		
<u>01-Apr-15 - 30-Jun-15</u>			<u>01-Apr-16 - 30-Jun-16</u>		
29			31		
Up 2 (7%)					
<u>Apr 15</u>	<u>May 15</u>	<u>Jun 15</u>	<u>Apr 16</u>	<u>May 16</u>	<u>Jun 16</u>
9	9	11	7	13	11

Previous Year to Date	Year to Date
<u>01 Apr 15 - 30 Jun 15</u>	<u>01 Apr 16 - 30 Jun 16</u>
29	31
Up 2 (7%)	

Prev Year Ending Selected Month	Year Ending Selected Month
<u>01 Jul 14 - 30 Jun 15</u>	<u>01 Jul 15 - 30 Jun 16</u>
103	103
No Change	

Please note - this chart uses police data (arson reported to the police), not data recorded by the London Fire Brigade and will therefore differ from the data used to report performance against the annual targets.

**iQuanta Volume Chart - Crimes
Metropolitan Police - Hillingdon
Possession of Drugs
01 Jul 2013 - 30 Jun 2016**



OFFICIAL SENSITIVE - Provisional data before it is finalised and published by the Office for National Statistics

Previous Quarter			Current Quarter		
<u>01 Jan 16 - 31 Mar 16</u>			<u>01 Apr 16 - 30 Jun 16</u>		
194			157		
<u>Jan 16</u>	<u>Feb 16</u>	<u>Mar 16</u>	<u>Apr 16</u>	<u>May 16</u>	<u>Jun 16</u>
72	69	53	48	57	52

Quarter Previous Year			Current Quarter		
<u>01-Apr-15 - 30-Jun-15</u>			<u>01-Apr-16 - 30-Jun-16</u>		
217			157		
<u>Apr 15</u>	<u>May 15</u>	<u>Jun 15</u>	<u>Apr 16</u>	<u>May 16</u>	<u>Jun 16</u>
69	63	85	48	57	52

Previous Year to Date	Year to Date
<u>01 Apr 15 - 30 Jun 15</u>	<u>01 Apr 16 - 30 Jun 16</u>
217	157

Prev Year Ending Selected Month	Year Ending Selected Month
<u>01 Jul 14 - 30 Jun 15</u>	<u>01 Jul 15 - 30 Jun 16</u>
861	811